



Onyx High Performance Spawn



**Amycel**

# Raw materials 1

Traditionally used materials:

- Grain: rye, millet
- Gypsum, lime, silicium



**Amycel**



# Raw materials 2

Onyxx is made with a wide variety of products:

- Grain: millet
- Inerte spawn carriers
- Several nutrients



**Amycel**





# Why Onyx

More points of inoculum:

Spawnpart or smaller, more parts in same volume



**Amycel**

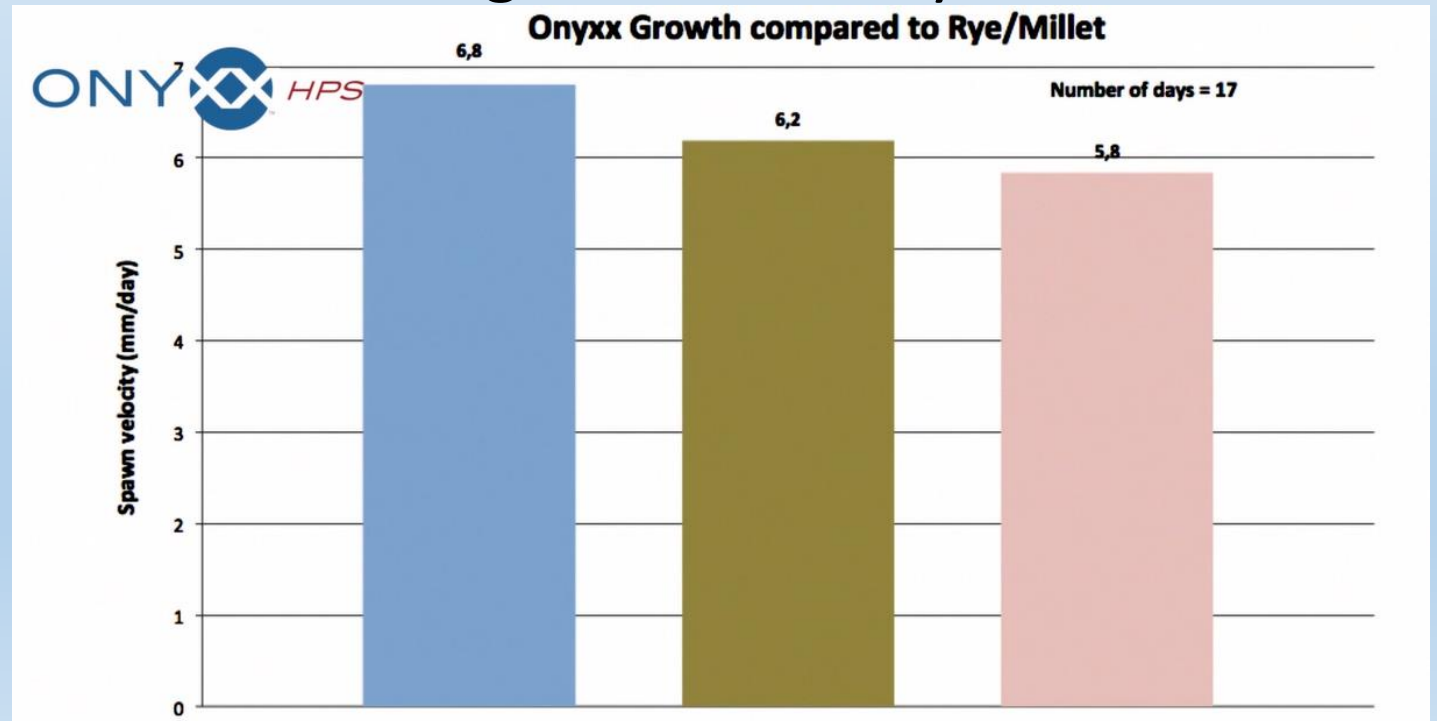
# Why Onyx

Fast growth:

Compost is fully colonised sooner:

14 days spawn run is comparable with 17 dagen traditionally

(at same spawn rate)



**Amycel**

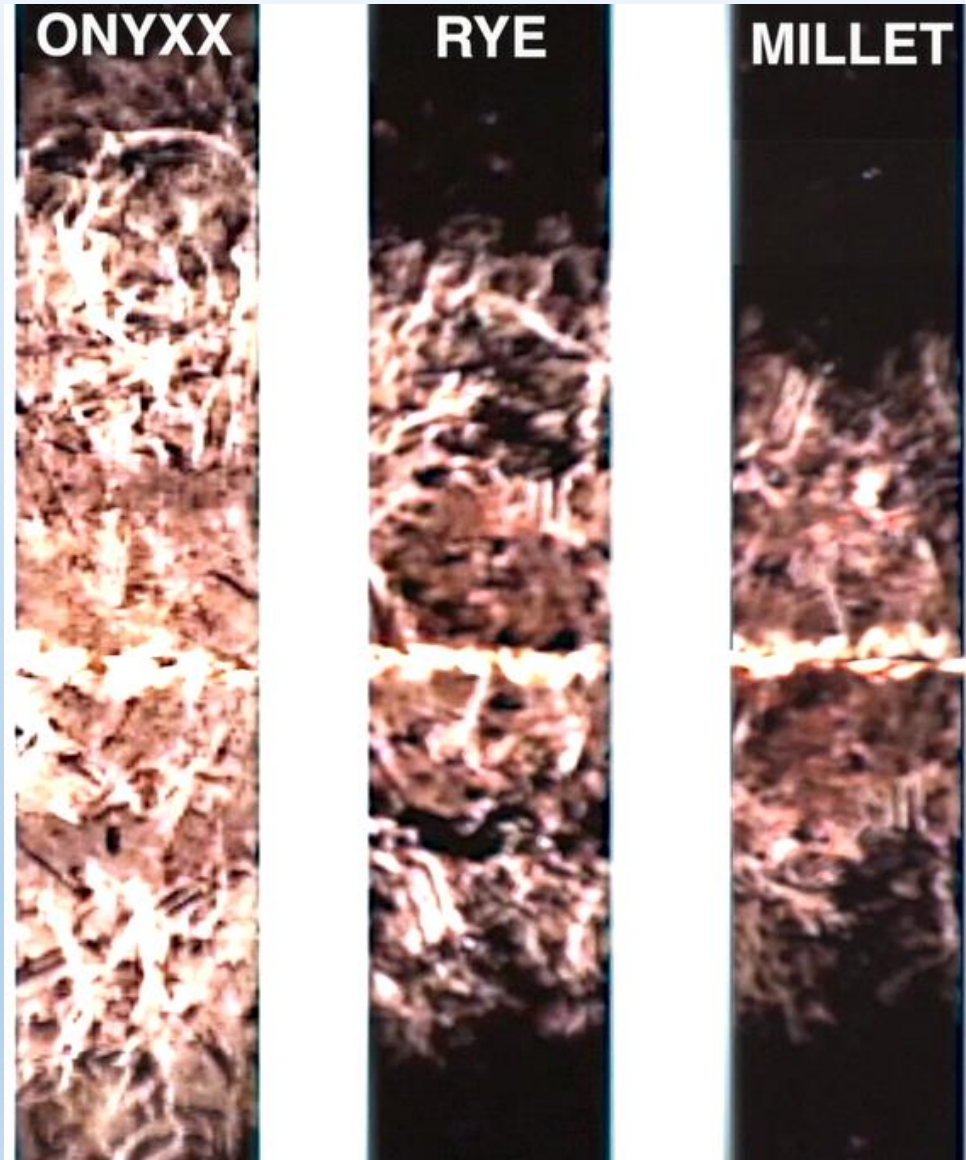
# Why Onyx

Better protection:

A better mycelium growth makes  
compost less sensible  
for green molds



**Amycel**



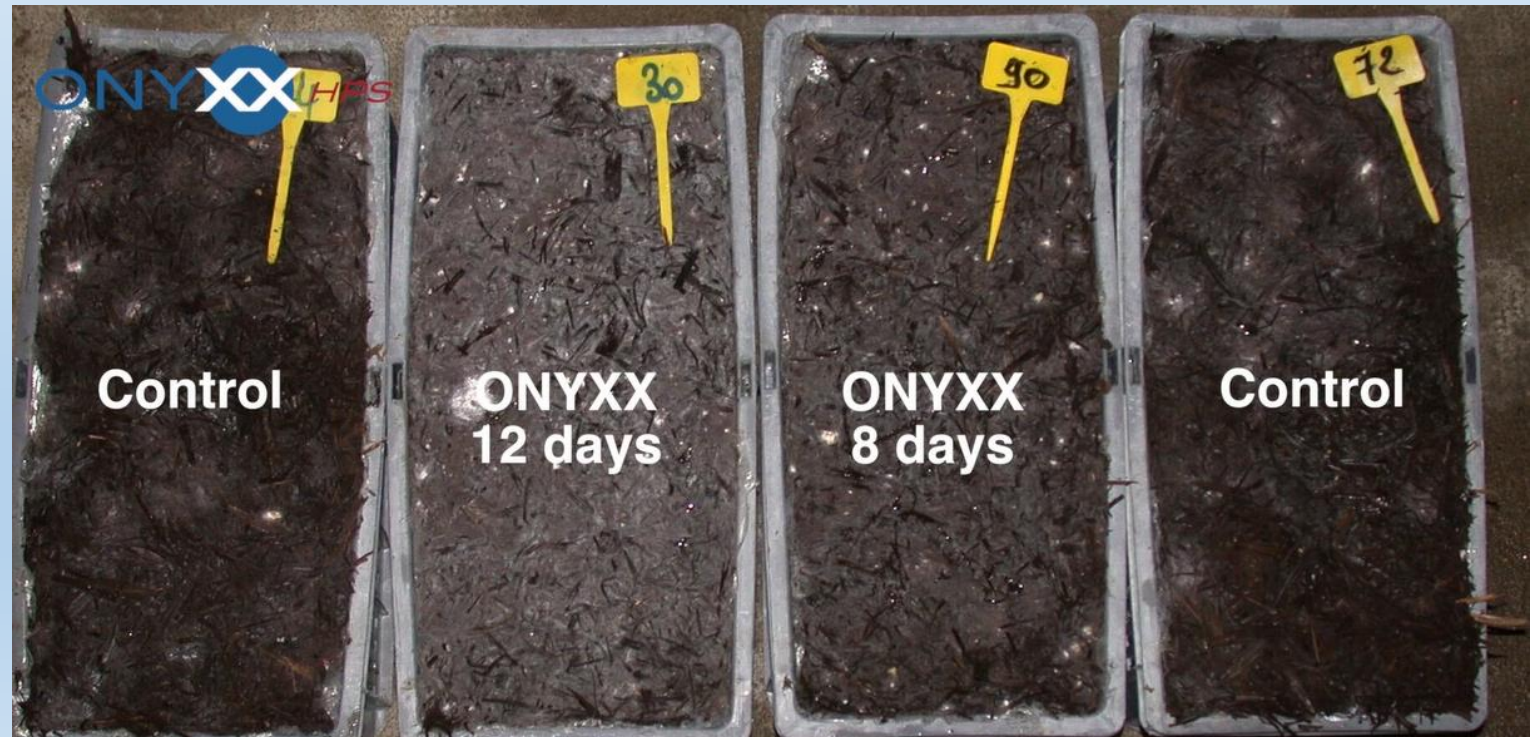


# Why Onyxx

Better colonised compost makes a bigger part of the nutrients in the compost accessible for production of mushrooms



**Amycel**



# Colonization in tunnel on day 13

**Onyxx**



**Rye**



**Amycel**



# Remarks

Spawnparts are firmly grown together. Solid.

Needs to be broken before spawning.

Can be done by hand,  
takes extra time.

Use available machine.



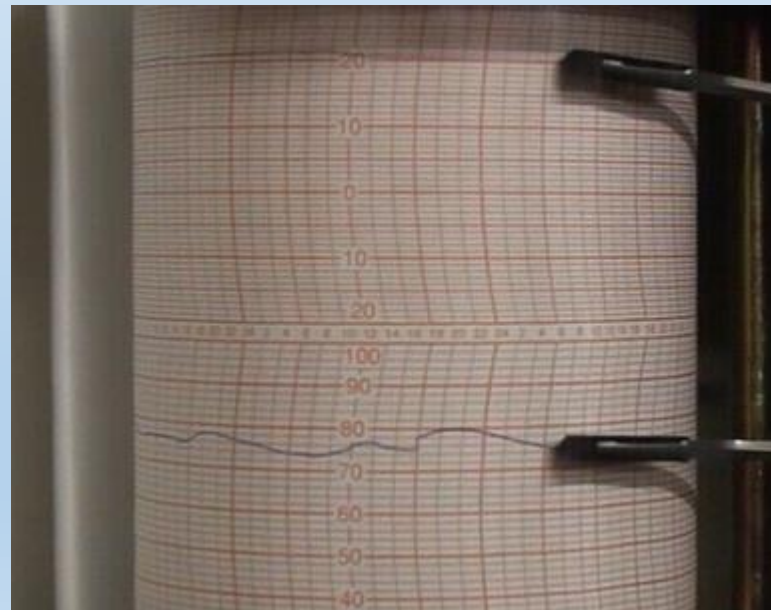
**Amycel**

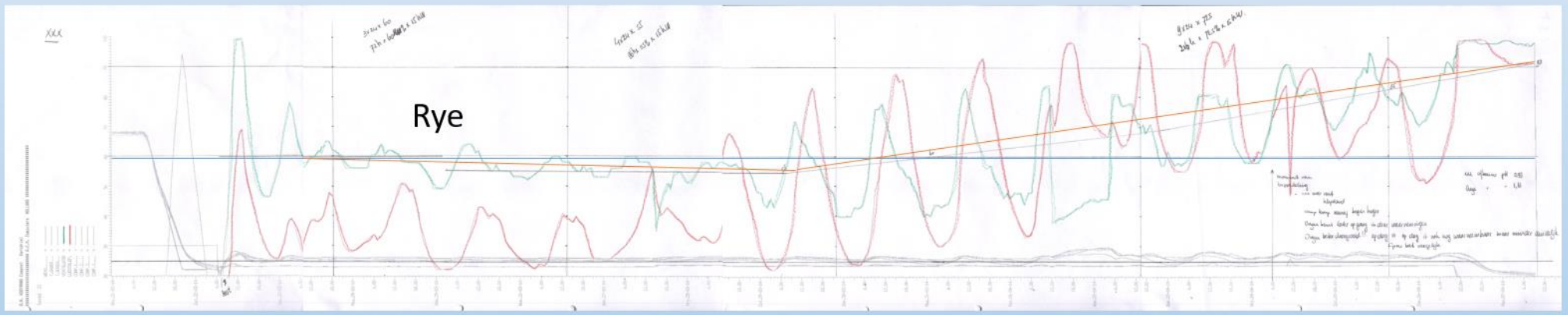
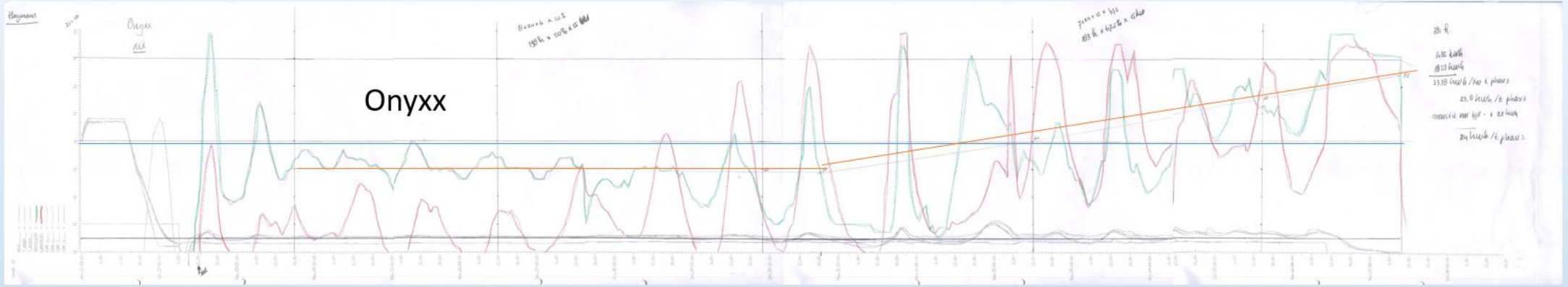
# Remarks

Composttemperature during spawnrun will stay calm.  
No real peak in temperature.



**Amycel**





**Amycel**



# Remarks

To be used while it is still young,  
within 4 weeks, preferably as quick as possible.



**Amycel**

# Results

In US other spawn carriers like Onyx are widely used.

In Europa trials on Onyx for almost 2 years, good results.



**Amycel**

# Interested?

Go for a trial, and experience yourself.



**Amycel**